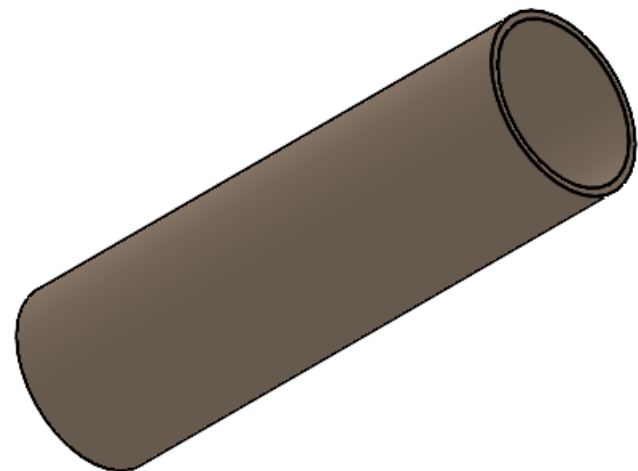
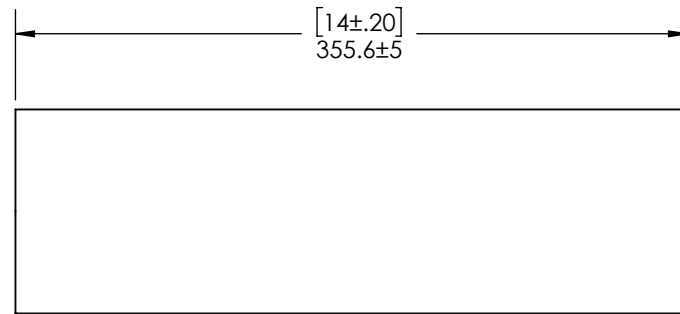
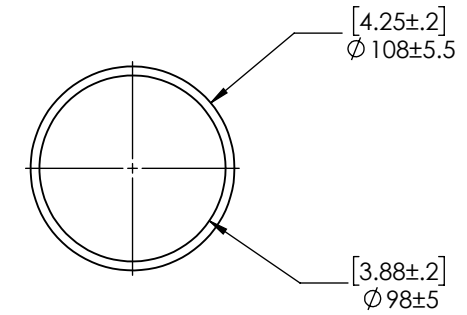


NOTES:

1. INTERPRET DRAWING, DIMENSIONS AND TOLERANCES AS PER ASME Y14.5M - 2009
2. MATERIAL: MULLITE, 60% ALUMINA, MV-30 OR APPROVED EQUIVALENT
3. FINISH: MATERIAL CONDITION, CLEAN
4. DIMENSIONS IN PARENTHESES ARE FOR REFERENCE ONLY.
5. DIMENSIONS NOT SHOWN TO BE EXTRACTED FROM SEPARATE ELECTRONIC FILE AND HAVE A NOMINAL TOLERANCE ±0.15.
6. BAG AND TAG WITH PART NUMBER: M2685_C



REV.	DESCRIPTION	DATE	DRAWN BY
A	INITIAL RELEASE	03/16/2016	JJ
B	LOOSEN LENGTH AND OD TOLERANCES. CLARIFY MATERIAL COMPOSITION.	5/13/2016	JJ
C	UPDATE MATERIAL AND MANUFACTURER	03/30/2021	TK



THIRD ANGLE PROJECTION		TITLE LINER, MULLITE, 4.25 IN OD X 3.875 IN ID X 14 IN			
UNLESS OTHERWISE SPECIFIED UNIT OF MEASURE: mm		SURFACE FINISH: $\sqrt{1.6}$		MATERIAL: SEE NOTE 2	
TOLERANCES:		DRAWN: JJ 08/15/2017		FINISH: SEE NOTE 3	
.X ±.1		CHECKED: BR 04/01/2021		SIZE: B	
.XX ±0.4				PART NO.: M2685	
±0.15				REV: C	
ANGULAR: MACH ± 0.5° BEND ± 1.0°		REDLEN TECHNOLOGIES		SCALE: 1:4	
REDLEN TECHNOLOGIES UNIT 123 1763 SEAN HEIGHTS SAANICHTON, BC, CANADA, V8M 0A5 PH: 250-456-5411 FAX: 250-456-5480 WWW.REDLIN.COM		REDLEN TECHNOLOGIES		SHEET 1 OF 1	